

301477

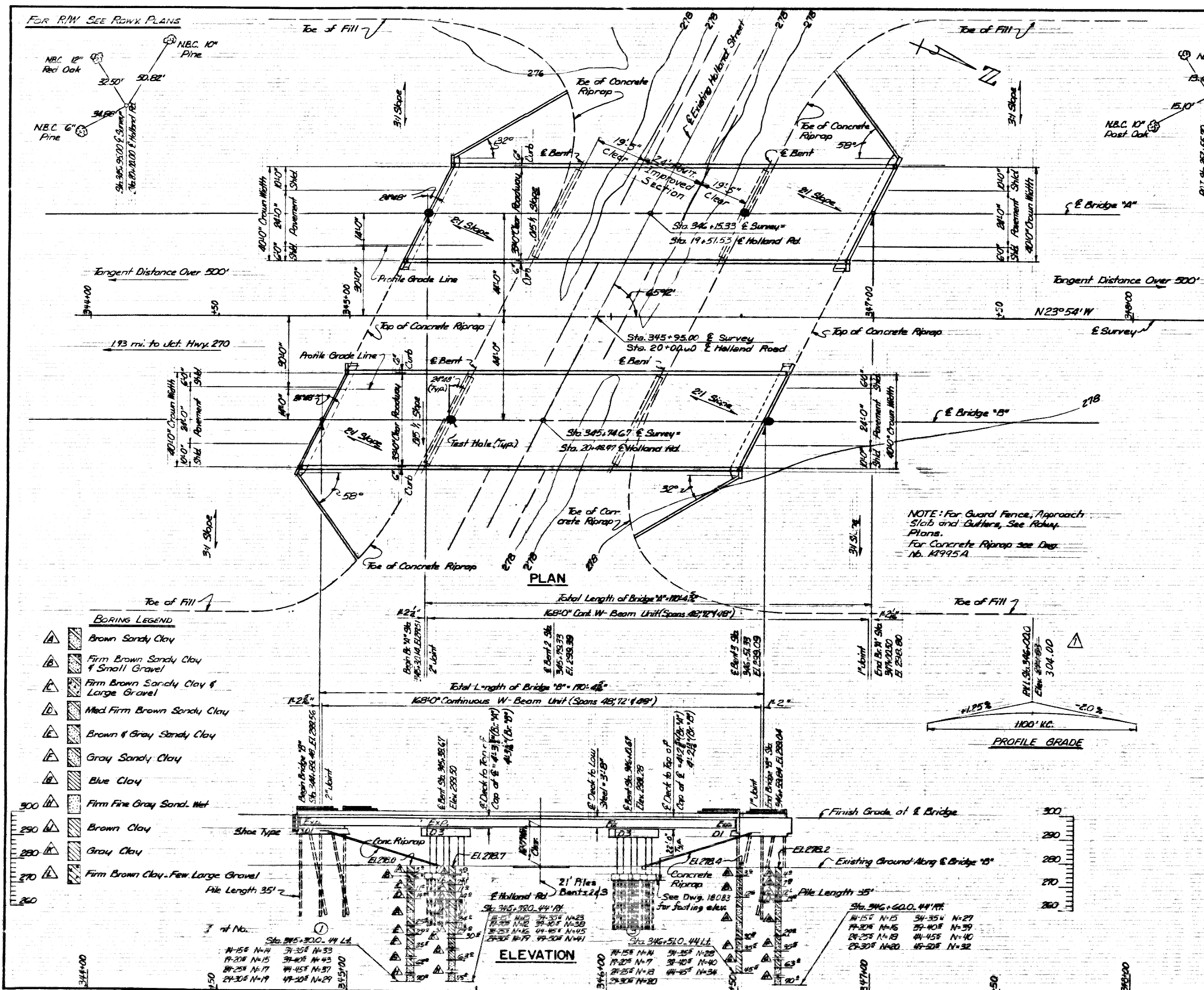
DATE REVISED	DATE FILMED	DATE REVISED	DATE FILMED	FED. ROAD NO.	STATE	FED. AID PROJ.	FISCAL YEAR	SHEET NO.	TOTAL SHEETS
9-18-73				6	ARK.	FF-025 2/31			
				JOB NO.		2782	16	157	
① 5500, 5501 A&B, - QUANT. - B.C. 74									

SCHEDULE OF BRIDGE QUANTITIES

BRIDGE NO.	CODE NO.	NAME PLATE TITLE	ITEM NO.	801	SP# 802	SP# 802	803	804	805	806	SP# 807	SP# 807	SP# 807	809	812	816
			ITEM	UNCLASS. EXCAVATION FOR STRUCTURES-BRIDGE	CLASS "S" CONCRETE	CLASS "SAE" CONCRETE	BOILED LINSEED OIL	REINFORCING STEEL	BEARING PILING (16")	ALTERNATE #1- METAL (ALUMINUM) BRIDGE RAILING TYPE "A" ALTERNATE #2- METAL (STEEL) BRIDGE RAILING TYPE "A"	STRUCTURAL STEEL IN BEAM SPANS (A36)	STRUCTURAL STEEL IN PLATE GIRDER SPANS (A36)	STRUCTURAL STEEL IN PLATE GIRDER SPANS (A572-50)	PREFORMED JOINT SEALER	BRIDGE NAME PLATES (TYPE "C")	CONCRETE RIPRAP
				UNIT	CU. YD.	CU. YD.	CU. YD.	GAL.	LB.	LIN. FT.	LIN. FT.	LB.	LB.	LB.	LIN. FT.	EACH
5500A	X271	HWY 270 OVERPASS	END BENTS 1#4	222	56.78		.4	5634	420			1914		1		190
			INTERMEDIATE BENTS 2#3	53	108.52			13916	761							
			226'-0" CONTINUOUS PLATE GIRDER UNIT			264.80	22.5	66570	452		166986	34460	104.0			
			TOTALS FOR BRIDGE NO. 5500A	275	165.30	264.80	22.9	86120	1181	452	168900	34460	104.0	1		190
5500B	X271	HWY 270 OVERPASS	END BENTS 1#4	222	56.51		.4	5634	425			1914		1		190
			INTERMEDIATE BENTS 2#3	60	108.49			13916	756							
			226'-0" CONTINUOUS PLATE GIRDER UNIT			264.80	22.5	66570	452		166986	34460	104.0			
			TOTALS FOR BRIDGE NO. 5500B	282	165.00	264.80	22.9	86120	1181	452	168900	34460	104.0	1		190
5501A	X271	HOLLAND ST OVERPASS	END BENTS 1#4	141	45.99		.4	4474	420		1456			1		150
			INTERMEDIATE BENTS 2#3	38	75.71			9863	635							
			168'-0" CONTINUOUS W-BEAM UNIT			187.80	16.8	43563	336	149654			95.0			
			TOTALS FOR BRIDGE NO. 5501A	179	121.70	187.80	17.2	57900	1055	336	151110		95.0	1		150
5501B	X271	HOLLAND ST OVERPASS	END BENTS 1#4	141	45.93		.4	4474	425		1456			1		150
			INTERMEDIATE BENTS 2#3	40	75.67			9863	630							
			168'-0" CONTINUOUS W-BEAM UNIT			187.80	16.8	43563	336	149654			95.0			
			TOTALS FOR BRIDGE NO. 5501B	181	121.60	187.80	17.2	57900	1055	336	151110		95.0	1		150
TOTALS FOR JOB NO. 2782			917	573.60	905.20	80.2	288040	4472	1576	302220	337600	68920	343.0	4	680	

SCHEDULE OF BRIDGE QUANTITIES  
HWY. 270 - HWY. 104  
JEFFERSON COUNTY  
ROUTE 65 SEC. 14  
ARKANSAS STATE HIGHWAY COMMISSION  
LITTLE ROCK, ARK.  
DRAWN BY: H. A. B. DATE: 8-20-73  
TRACED BY: \_\_\_\_\_ DATE: \_\_\_\_\_ SCALE: \_\_\_\_\_  
CHECKED BY: \_\_\_\_\_ DATE: \_\_\_\_\_  
BRIDGE NO. 5500 A & B  
5501 A & B  
DRAWING NO. 18074





DATE	BY	CHKD	DATE	BY	CHKD	DATE	BY	CHKD	DATE	BY	CHKD
7-18-73			3-11-74								
3-11-74			5-17-74								

STATE	PROJECT NO.	SECTION NO.	DATE	BY	CHKD	DATE	BY	CHKD
ARK.	2782	23	197					

**GENERAL NOTES**

BENCH MARK - R.R. SPIKE IN COMB. POLE 217' RT. STA. 345+20.0, ELEV. 278.64.

IN GENERAL, ALL CONSTRUCTION JOINTS SHALL BE HORIZONTAL AND SHALL BE PROVIDED WITH KEYS NOT LESS THAN 1-1/2" HIGH COVERING THE MIDDLE THIRD OF BOTH DIMENSIONS.

ALL PILING SHALL BE 16" OCTAGONAL PRECAST CONCRETE OR 16" CONCRETE FILLED METAL SHELLS AND SHALL BE DRIVEN WITH AN APPROVED AIR, STEAM OR DIESEL HAMMER TO A MINIMUM BEARING CAPACITY OF 44 TONS PER PILE AND TO A MINIMUM PENETRATION OF 20' BELOW THE GROUND LINE. LENGTHS OF PILES SHOWN ARE ASSUMED FOR ESTIMATING QUANTITIES ONLY. ACTUAL LENGTHS TO BE DETERMINED IN THE FIELD. DRIVE ONE 40' TEST PILE IN END BENT, BRIDGE "B" AND ONE 26' TEST PILE IN INTERIOR BENT "A". PILES IN END BENTS SHALL BE DRIVEN AFTER EMBANKMENT TO SUBGRADE IS IN PLACE.

ALL CONCRETE IN THE SUPERSTRUCTURE SHALL BE CLASS "SAC". ALL CONCRETE IN THE SUBSTRUCTURE SHALL BE CLASS "S" AND SHALL BE POURED IN THE DRY. ALL EXPOSED CORNERS SHALL BE CHAMFERED 3/4" UNLESS OTHERWISE NOTED.

FOR DETAILS OF END BENTS, SEE DWG. NO. 18082.  
FOR DETAILS OF INTERMEDIATE BENTS, SEE DWG. NO. 18083.  
FOR DETAILS OF SUPERSTRUCTURE, SEE DWG. NOS. 18084, 18085, 18086.  
FOR DETAILS OF PRECAST CONCRETE PILING, SEE DWG. NO. 2382.  
FOR DETAILS OF CONCRETE FILLED METAL SHELL PILING, SEE DWG. NO. 2381A.

SPECIFICATIONS: ARKANSAS STATE HIGHWAY COMMISSION STANDARDS SPECIFICATIONS FOR HIGHWAY CONSTRUCTION, EDITION OF 1972, AND APPLICABLE SPECIAL PROVISIONS.

DESIGN SPECIFICATIONS: AASHTO 1969  
LIVE LOADING: HS20  
UNIT STRESSES: CLASS S AND S(AE) CONCRETE (N-18) 1,200 PSI  
REINFORCING STEEL 20,000 PSI  
STRUCTURAL STEEL (A36) 20,000 PSI

△ Revised - Changed Profile Grade Elev. - As Shown. 3-11-74 LDF

LAYOUT OF BRIDGES  
OVER HOLLAND STREET  
HWY. 270 - HWY. 104  
JEFFERSON COUNTY

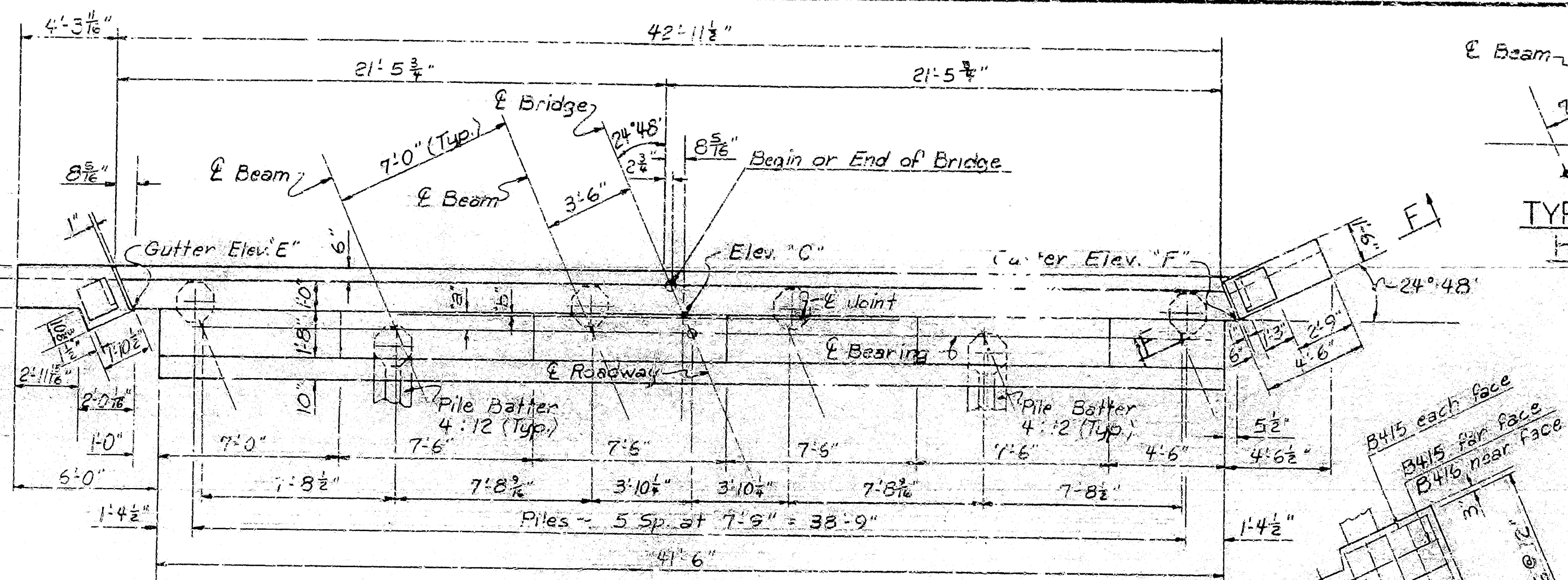
ROUTE 65 SEC. 14  
ARKANSAS STATE HIGHWAY COMMISSION  
LITTLE ROCK, ARK.

DRAWN BY: K.M.G. DATE: 2 NOVEMBER 72  
TRACED BY: G.V.A. DATE: 5 FEB 73  
CHECKED BY: G.V.A. DATE: 5 FEB 73

BRIDGE NO. 5501 A & B DRAWING NO. 18081

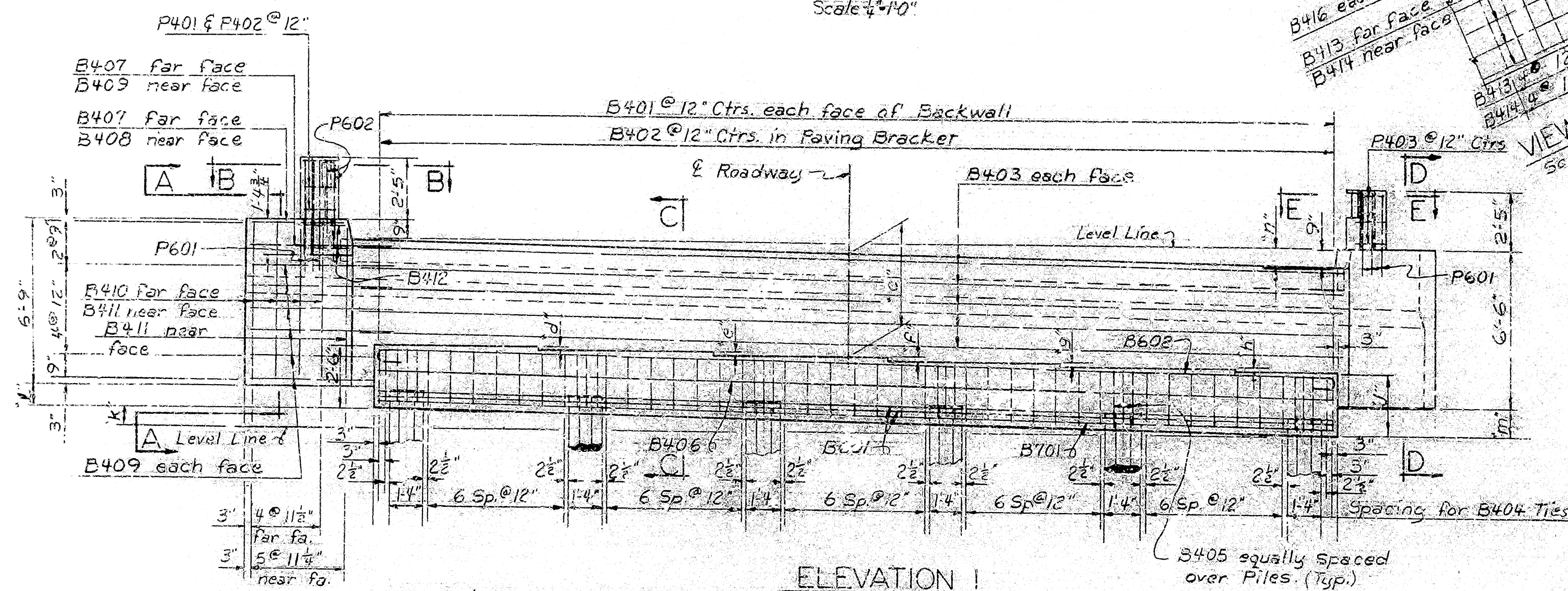


Note: Plan View is typ. for both End Bents of Bridges A and B. Length of steps in Plan View are typ. only for Bent No. 1 of Bridge A and Bent No. 4 of Bridge B. For length of steps for Bent No. 1 of Bridge B and Bent No. 4 of Bridge A see Elevation C.



Scale  $\frac{1}{4}'' = 1'-0''$

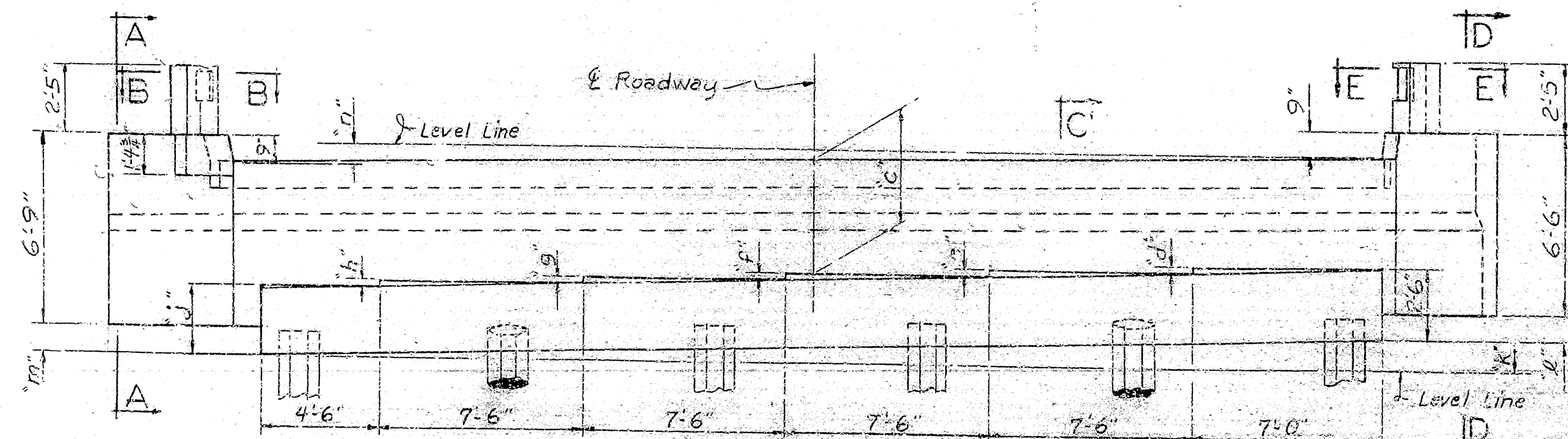
Scale  $\frac{1}{4}'' = 1'-0''$



Scale  $\frac{1}{4}"=1'-0"$

Scale  $\frac{1}{4}"=1'-0"$

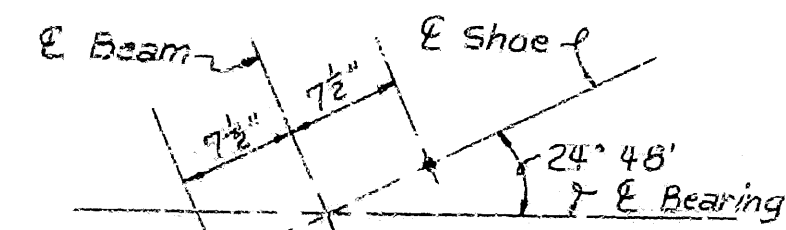
Note: Reinforcing Steel in Elevation 1 is typ. for both End Bents of Bridge A and B. Elevation 1 is looking back at Bent 1 of Bridge A and looking forward at Bent No. 4 of Bridge B.



Scale  $\frac{1}{4}'' = 1'-0''$

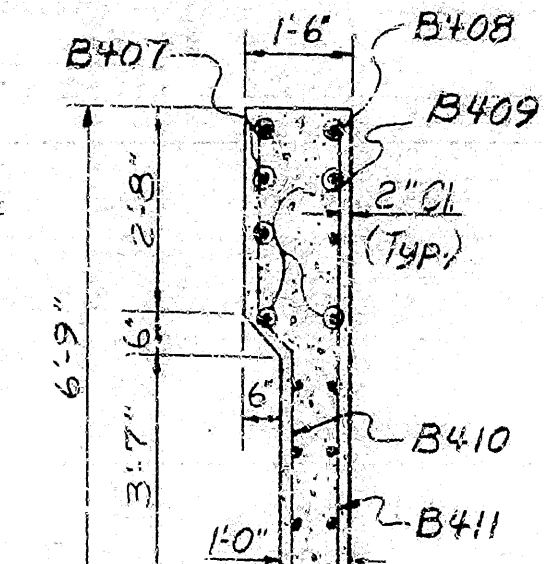
Scale  $\frac{1}{4}'' = 1'-0''$

Note: Elevation 2 is looking back at Bent No. 1 of Bridge B and looking forward at Bent No. 4 Bridge A.



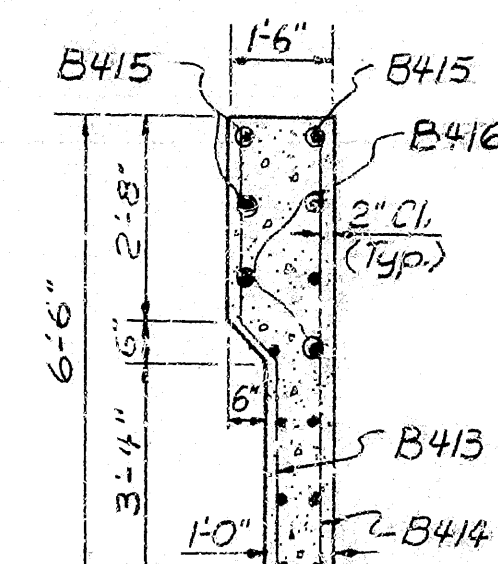
TYP. ANCHOR BOLTS  
HOLE LAYOUT

Scale 1" = 1'-0"



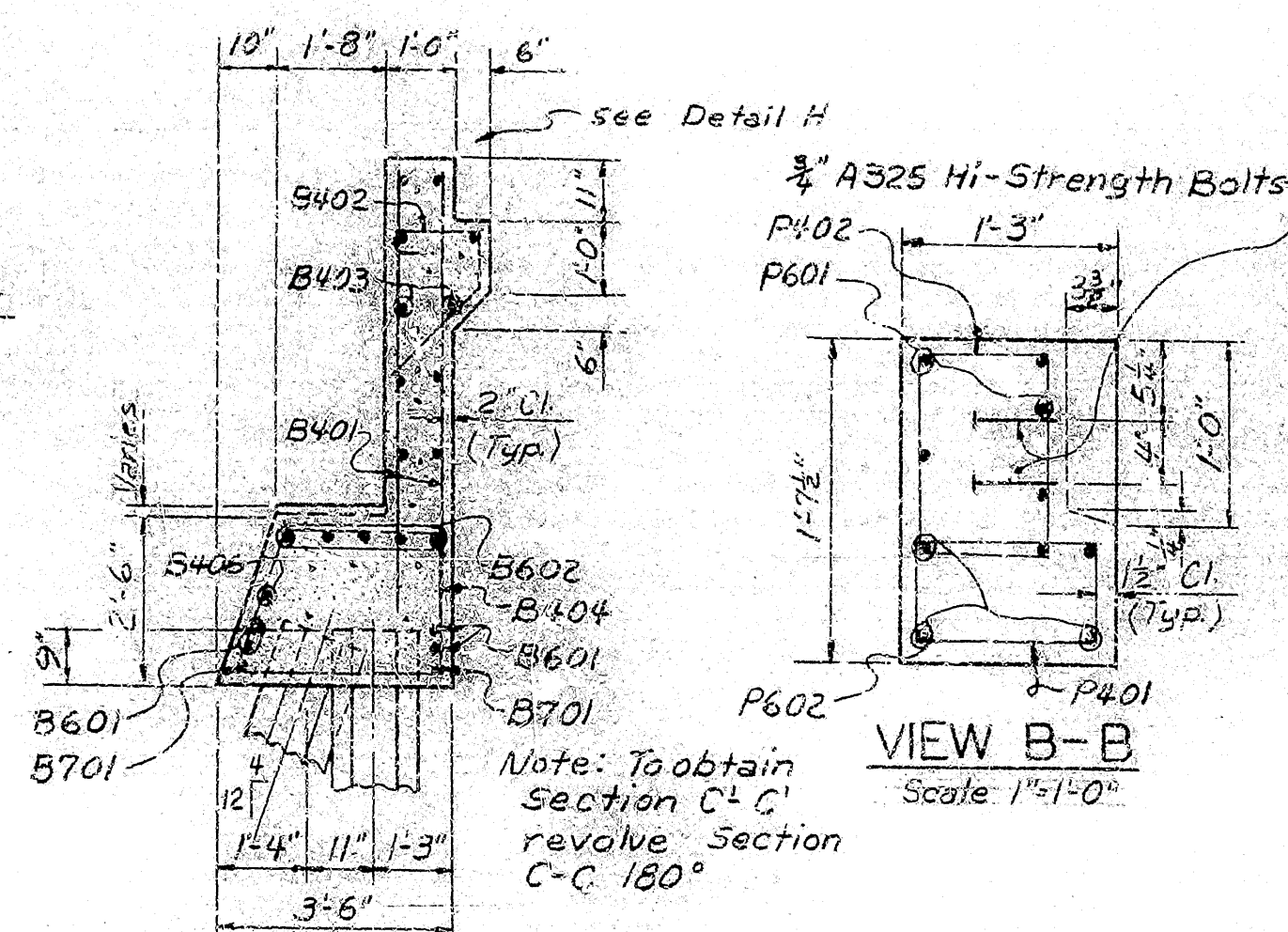
Scale  $\frac{3}{8}" = 1'-0"$

Scale  $\frac{3}{8}" = 1'-0"$



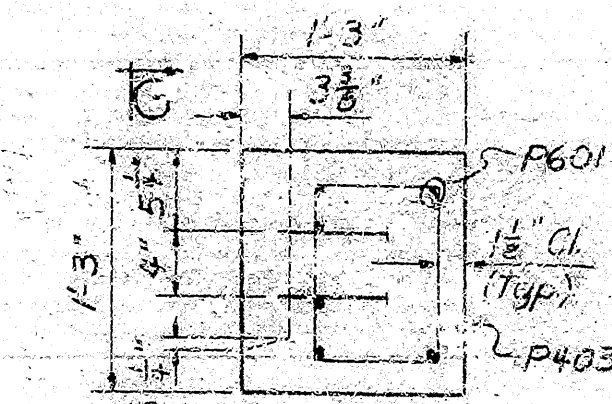
Scale  $\frac{3}{8}" = 1'-0"$

Scale  $\frac{3}{8}" = 1'-0"$



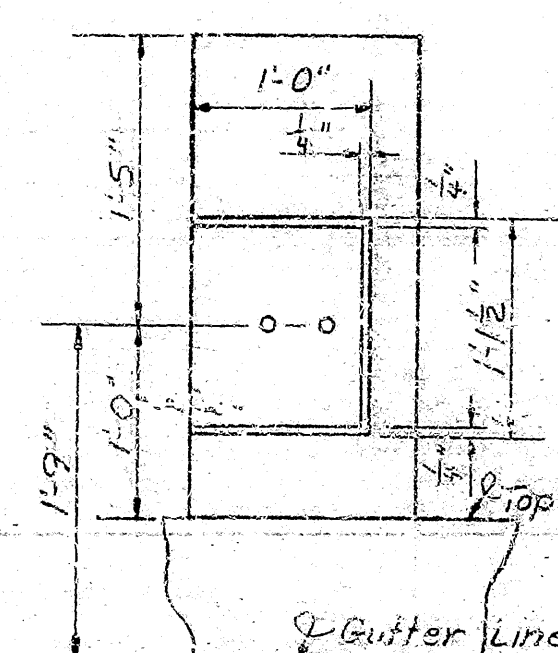
Scale  $\frac{3}{8}" = 1'-0"$

Scale  $\frac{3}{8}" = 1'-0"$



Scale 1"=1'-0"

Scale 1"=1'-0"



No Scale

No Scale

DATE REVISED	DATE FILMED	DATE REVISED	DATE FILMED	FED. ROAD NO.	STATE	FED. AID PROG.	FISCAL YEAR	SHEET NO.	TOTAL SHEETS
9-18-73				6	ARK.	FF-025 2081			
7-19-74	5-8-74-74								
				JOB NO.	2782			24	187

①-550LA#8. End Bents Dtl's 18082

### TABLE OF VARIABLES

	Elev. "C"	Elev. "E"	Elev. "F"	"a"	"b"	"c"	"d"	"e"	"f"	"g"	"h"	"j"
Bridge A Bent 1	299.51	299.82	299.20	7 $\frac{3}{4}$ "	$\frac{5}{16}$ "	4'-2 $\frac{3}{16}$ "	1 $\frac{1}{16}$ "	1 $\frac{1}{16}$ "	1 $\frac{1}{16}$ "	1 $\frac{1}{16}$ "	1 $\frac{1}{16}$ "	2'-7 $\frac{3}{16}$ "
Bridge A Bent 4	298.80	298.45	299.15	7 $\frac{1}{16}$ "	$\frac{3}{4}$ "	4'-2 $\frac{3}{16}$ "	1 $\frac{1}{2}$ "	1 $\frac{1}{2}$ "	1 $\frac{1}{2}$ "	1 $\frac{1}{2}$ "	1 $\frac{1}{2}$ "	2'-7 $\frac{3}{8}$ "
Bridge B Bent 1	299.55	299.27	299.84	7 $\frac{13}{16}$ "	1"	4'-2 $\frac{3}{8}$ "	1 $\frac{1}{4}$ "	1 $\frac{1}{4}$ "	1 $\frac{1}{4}$ "	1 $\frac{1}{4}$ "	1 $\frac{1}{4}$ "	2'-7 $\frac{3}{16}$ "
Bridge B Bent 4	299.05	299.29	298.81	7 $\frac{1}{2}$ "	$\frac{1}{16}$ "	4'-2 $\frac{1}{2}$ "	1 $\frac{1}{16}$ "	1 $\frac{1}{16}$ "	1 $\frac{1}{16}$ "	1 $\frac{1}{16}$ "	1 $\frac{1}{16}$ "	2'-7"

B408

B409

CL  
(P.)

	"k"	"l"	"m"	"n"	"o"	
Bridge A Bent 1	7 $\frac{3}{4}$ "	9 $\frac{3}{8}$ "	1'-0 $\frac{3}{4}$ "	7 $\frac{3}{8}$ "	+ $\frac{1}{16}$ "	
Bridge A Bent 4	8 $\frac{2}{3}$ "	1'-0 $\frac{3}{8}$ "	9 $\frac{13}{16}$ "	8 $\frac{7}{16}$ "		
Bridge B Bent 1	7 $\frac{1}{16}$ "	1'-0 $\frac{1}{16}$ "	9 $\frac{13}{16}$ "	6 $\frac{15}{16}$ "	- $\frac{1}{16}$ "	
Bridge B Bent 4	6 $\frac{5}{16}$ "	9 $\frac{1}{4}$ "	1'-0 $\frac{3}{8}$ "	5 $\frac{23}{16}$ "	+ $\frac{1}{8}$ "	

BAR LIST (ONE BENT)

[illegible]

Note: All concrete shall be Class 5 and shall be poured in the dry. All exposed corners to be chamfered  $\frac{3}{8}$ " unless otherwise noted. Reinforcing Steel to be ASTM A615, Grade 40.  
Shop List and Bending Diagrams must be submitted and approval secured before fabrication is begun.  
All Piling shall be 16" Oct.-Precast or 16" Concrete Filled Metal Shells.

DETAILS OF END BENTS  
HOLLAND STREET  
HWY. 270 - HWY. 104  
JEFFERSON COUNTY

ROUTE 65 SEC. 14

ARKANSAS STATE HIGHWAY COMMISSION

LITTLE ROCK, ARK.

DRAWN BY: D.P.H. DATE: 26 Jan. 73

SCALE: As Noted

CHECKED BY: GVA DATE: 1 Feb 73

CA 16

BRIDGE NO. 5501A &amp; B. DRAWING NO. 18082

*Viral Puckert*  
BRIDGE ENGINEER

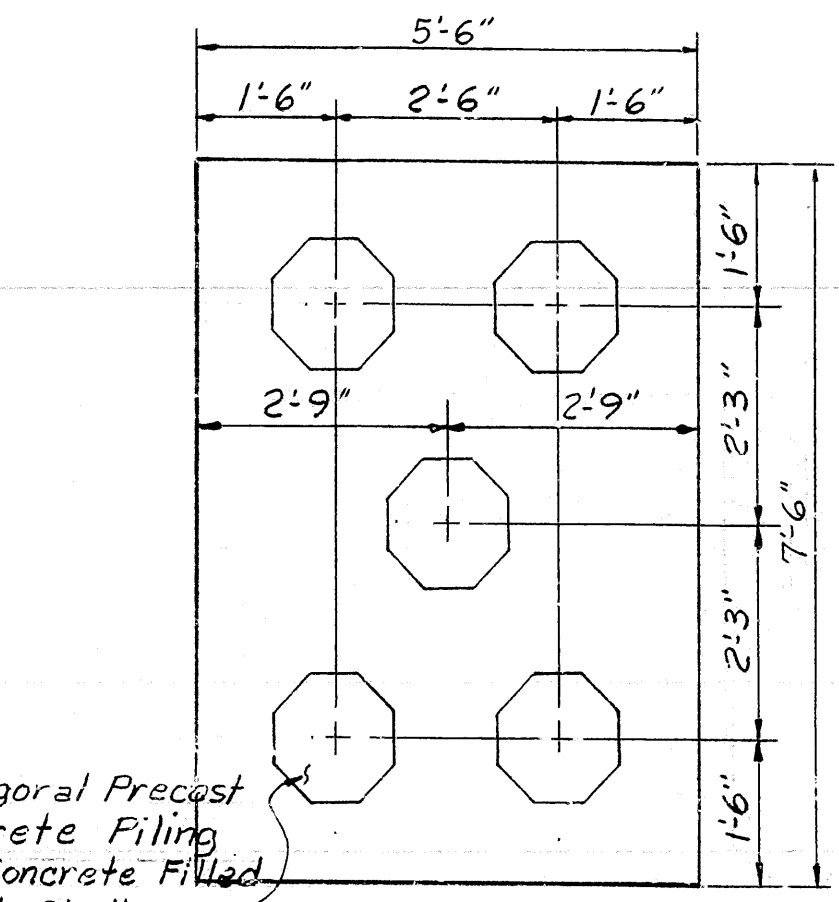
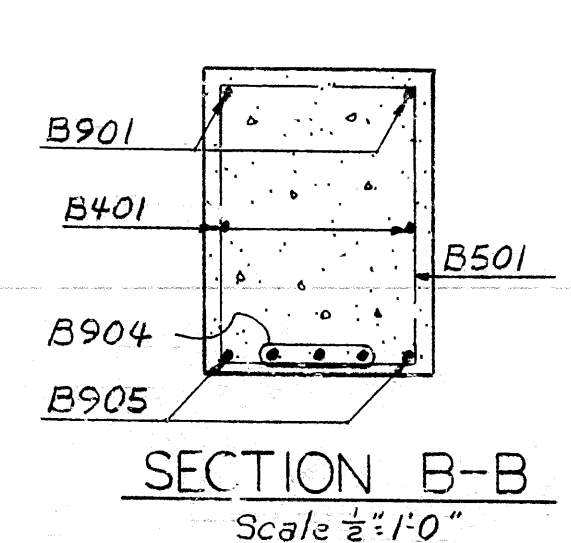
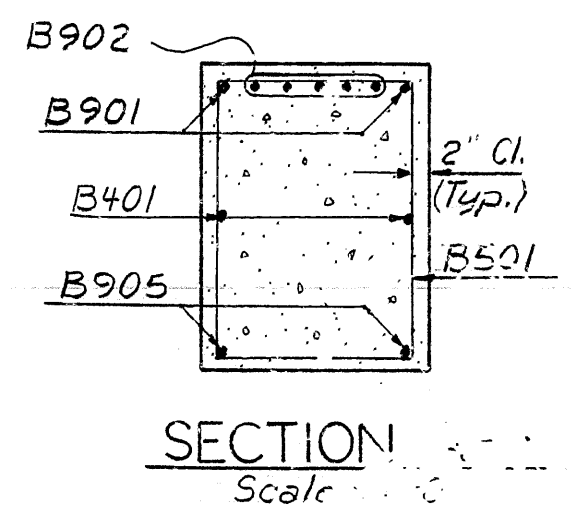


310 186

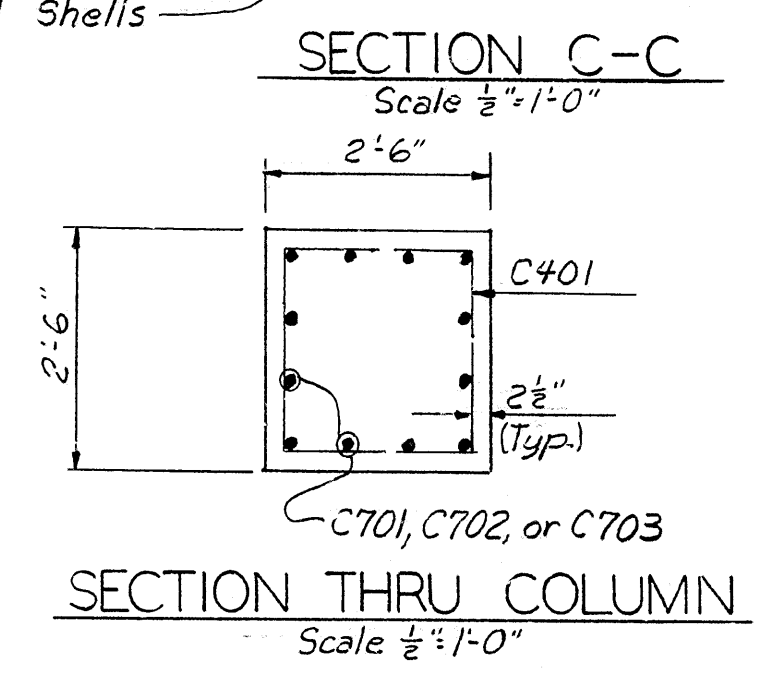
DATE REVISED	DATE FILMED	DATE REVISED	DATE FILMED	FED. ROAD NO.	STATE	FED. AID PROJ.	FISCAL YEAR	SHEET NO.	TOTAL SHEETS
7-18-73				6	ARK.	RF-025-2(3)			
				JOB NO.		2782	25	187	
				5501 A & B Bents 2 & 3				18083	

TABLE OF VARIABLES

	"e"	"c"	"d"	"e"	"f"	"g"	"h"	"j"	"k"	"m"	Elev. "A"	Elev. "B"
Bent A-2	1 1/8"	1 1/8"	1 1/8"	1 1/8"	3 1/2"	8 1/4"	15' 7 3/4"	15' 4 3/8"	15' 1 1/2"	22'-0"	295.13	273.13
Bent A-3	1 1/8"	1 1/8"	1 1/8"	1 1/8"	3 1/2"	8 1/4"	15' 7 3/4"	15' 4 3/8"	15' 1 1/8"	22'-0"	294.87	272.87
Bent B-2	1 1/8"	1 1/8"	1 1/8"	1 1/8"	3 1/2"	7 5/8"	15' 7 3/4"	15' 4 3/8"	15' 2 3/8"	22'-0"	295.22	273.22
Bent B-3	1 1/8"	1 1/8"	1 1/8"	1 1/8"	3 1/2"	6 3/4"	15' 7 3/4"	15' 4 3/8"	15' 2 1/4"	22'-0"	295.05	273.05

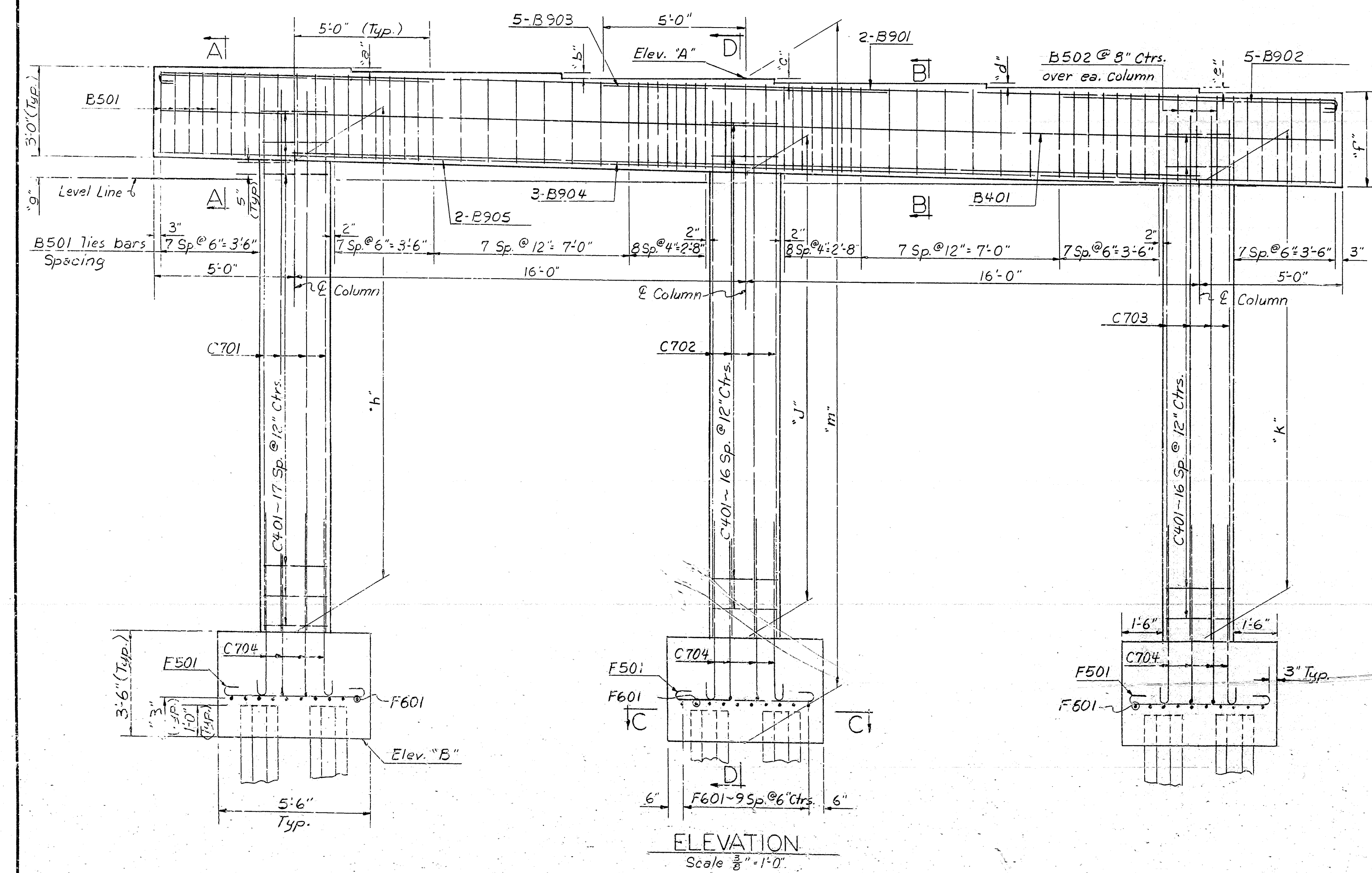
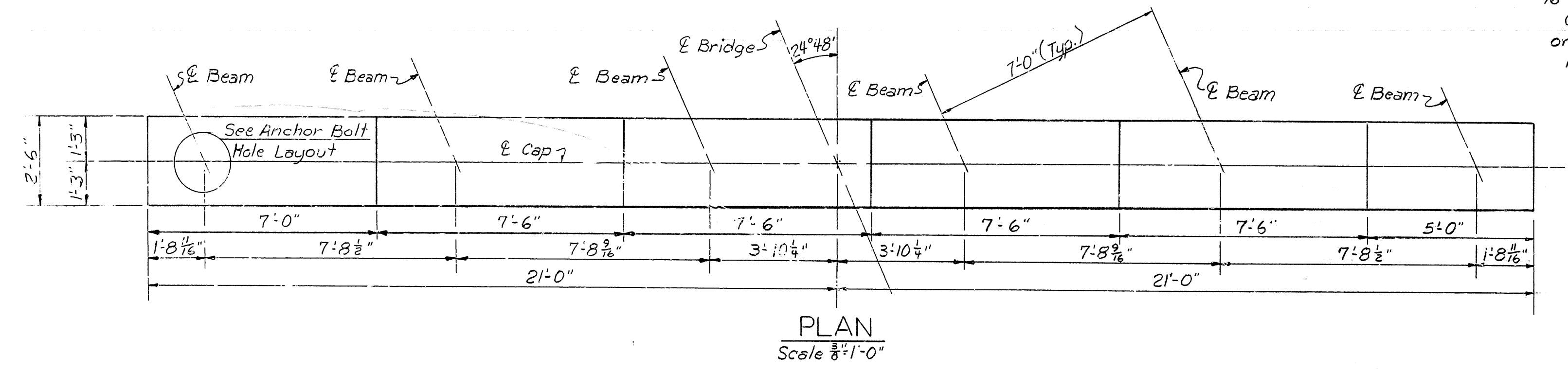
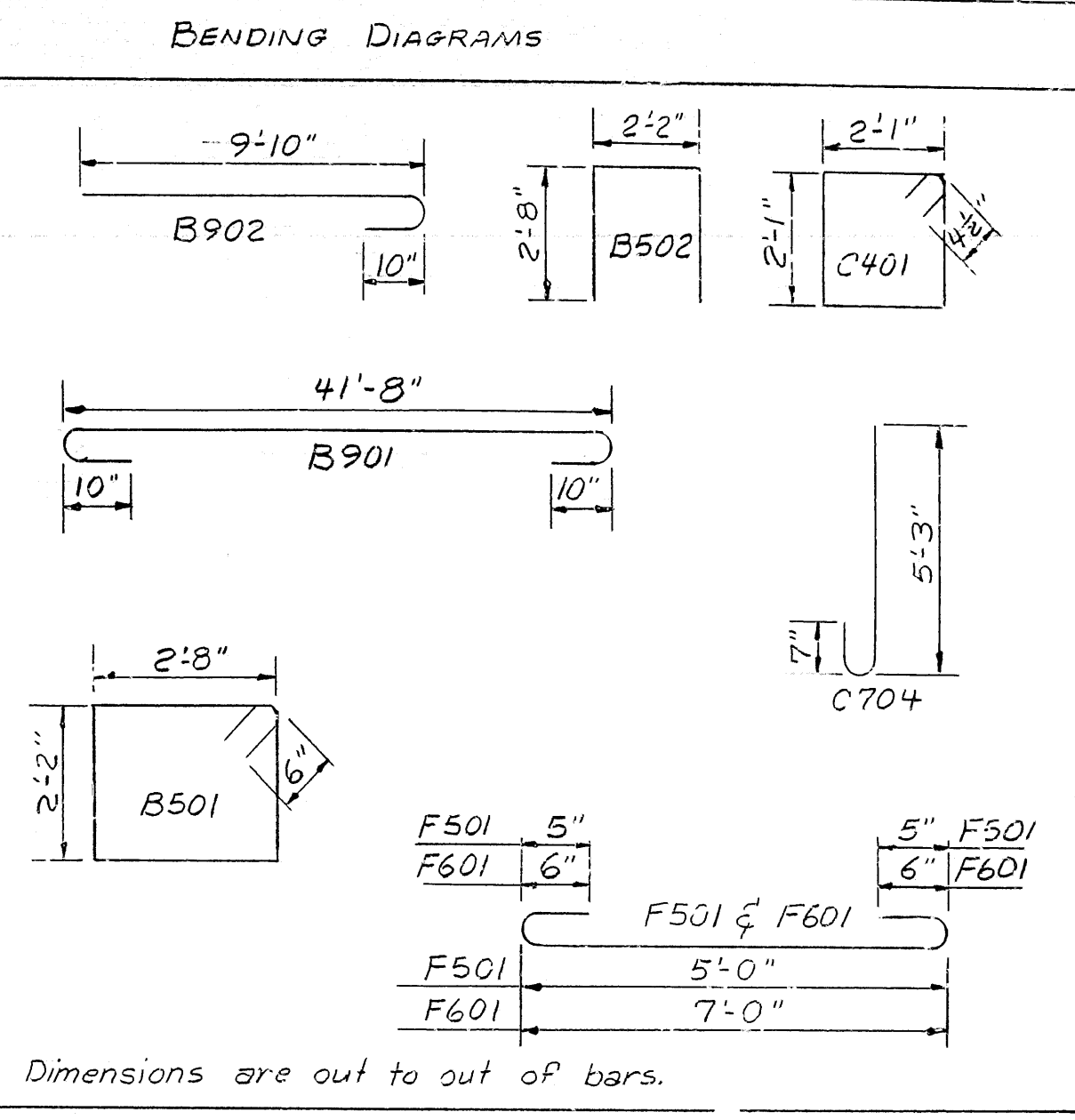


16" Octagonal Precast Concrete Piling or 16" Concrete Filled Metal Shells

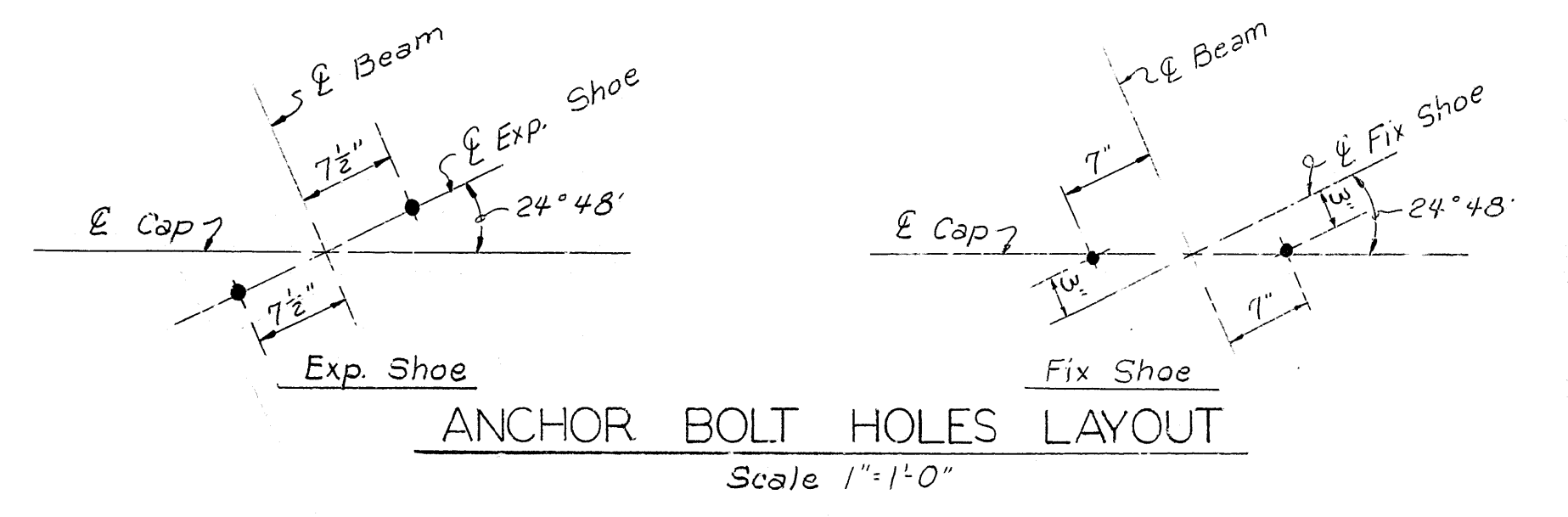
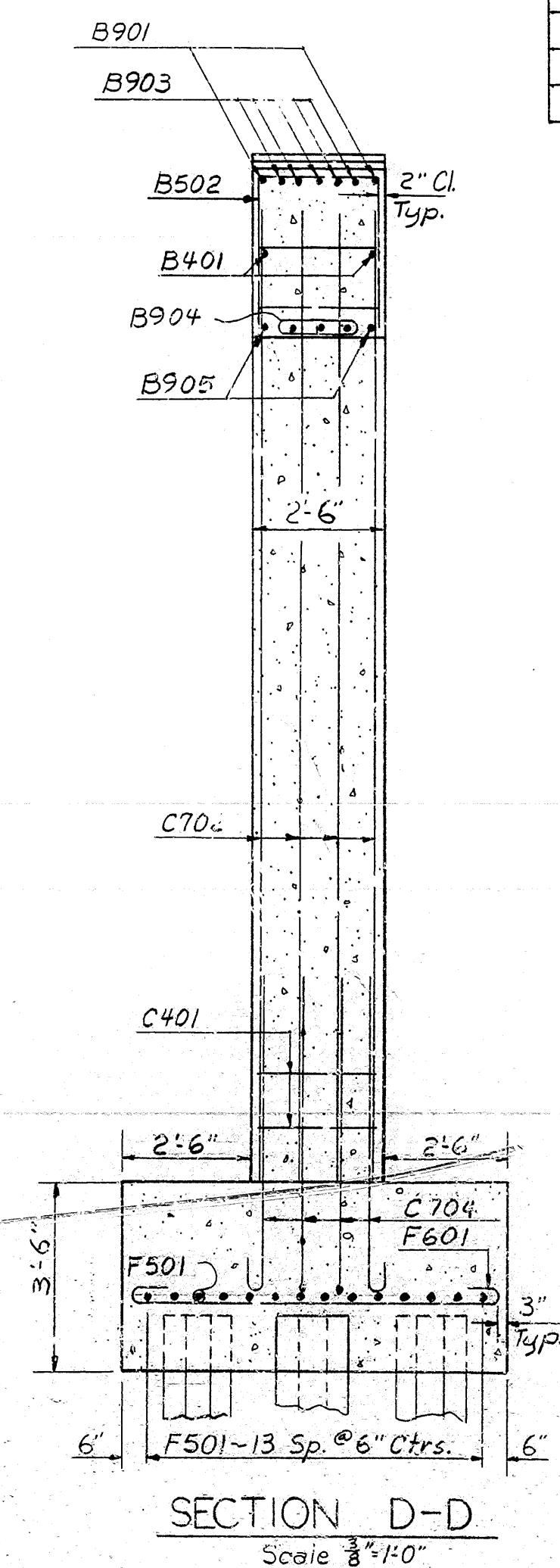


BAR LIST (ONE BENT)

MARK	No Req'd	LENGTH	PIN Dia.
F501	42	6'-2"	3 3/4"
F601	30	8'-4"	4 1/2"
C401	52	8'-10"	2"
C701	12	17'-8"	Str.
C702	12	17'-5"	Str.
C703	12	17'-2"	Str.
C704	36	6'-1"	5 1/4"
B401	2	4'-8"	Str.
B501	62	10'-4"	2 1/2"
B502	9	7'-4"	2 1/2"
B901	2	4'-2"	9"
B902	10	11'-1"	9"
B903	5	10'-0"	Str.
B904	3	32'-0"	Str.
B905	2	4'-8"	Str.



Note: Looking Upstream For Bridge 5501-B (Rt.)  
Looking Downstream For Bridge 5501-A (Lt.)



GENERAL NOTES

ALL CONCRETE SHALL BE CLASS "S" AND SHALL BE POURED IN THE DRY.  
ALL EXPOSED CORNERS SHALL BE CHAMFERED 3/4" UNLESS OTHERWISE NOTED.

REINFORCING STEEL SHALL BE ASTM A615, GRADE 40. SHOP LISTS AND BENDING DIAGRAM SHALL BE SUBMITTED AND APPROVAL SECURED BEFORE FABRICATION IS BEGUN.

FOR PILING, SEE LAYOUT, DWG. NO. 18081

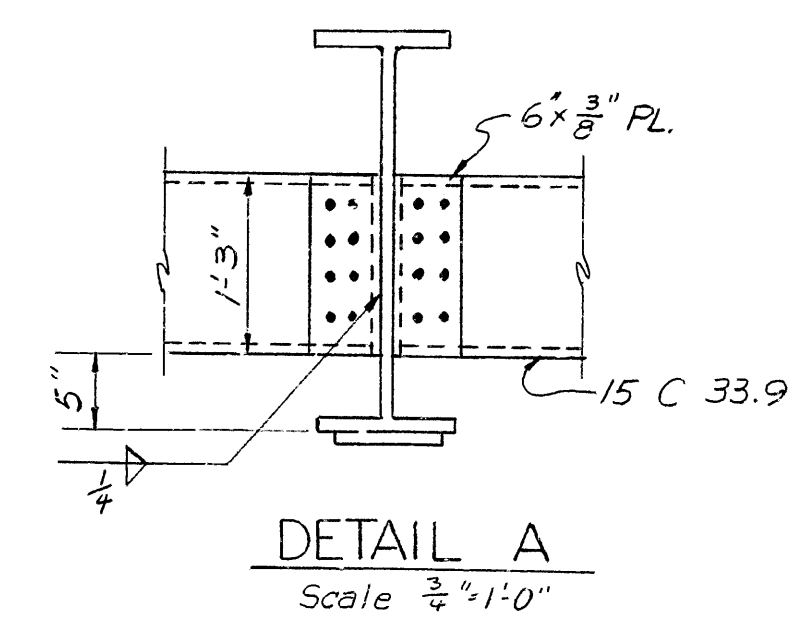
DETAILS OF BENTS 2 & 3  
HOLLAND STREET  
HWY. 270 - HWY. 104  
JEFFERSON COUNTY  
ROUTE 65 SEC. 14

ARKANSAS STATE HIGHWAY COMMISSION  
LITTLE ROCK, ARK.

DRAWN BY: D.P.H. DATE: 22 Jan. 73  
TRACED BY: DATE: SCALE: As Noted  
CHECKED BY: GVA DATE: 31 Jan. 73

BRIDGE NO. 5501 A & B DRAWING NO. 18083



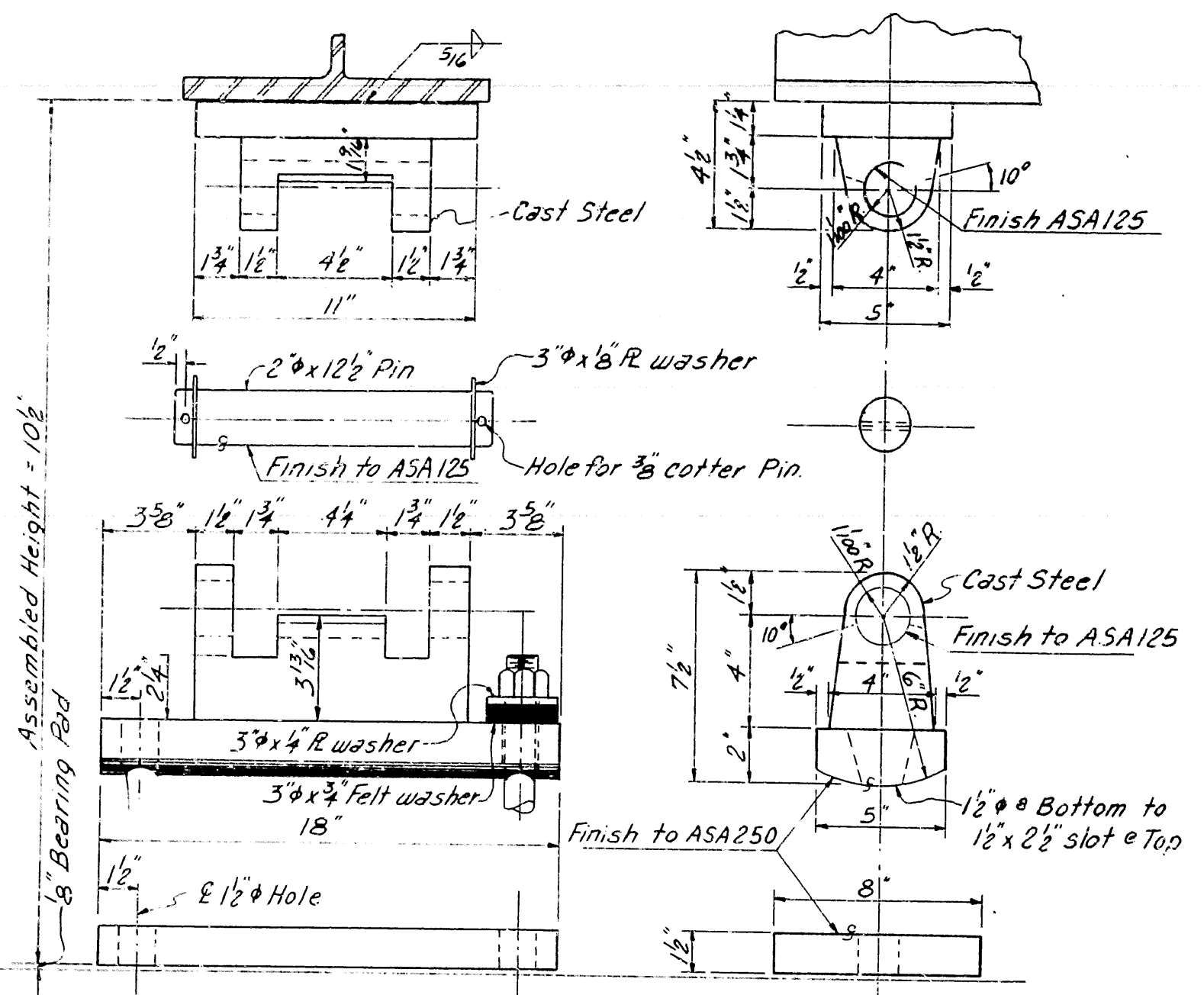


SHEET 1 OF 3  
DETAILS OF CONTINUOUS  
W-BEAM UNIT  
HOLLAND STREET  
HWY 270 - HWY 104  
JEFFERSON COUNTY  
ROUTE 65 SEC. 14  
ARKANSAS STATE HIGHWAY COMMISSION  
LITTLE ROCK, ARK.  
DRAWN BY: D.R.H. DATE: 15 Jan 73  
TRACED BY: \_\_\_\_\_ DATE: \_\_\_\_\_  
CHECKED BY: G.K.A. DATE: 31 Jan 73  
SCALE: As Noted  
BRIDGE NO. 5501 A & B DRAWING NO. 18084



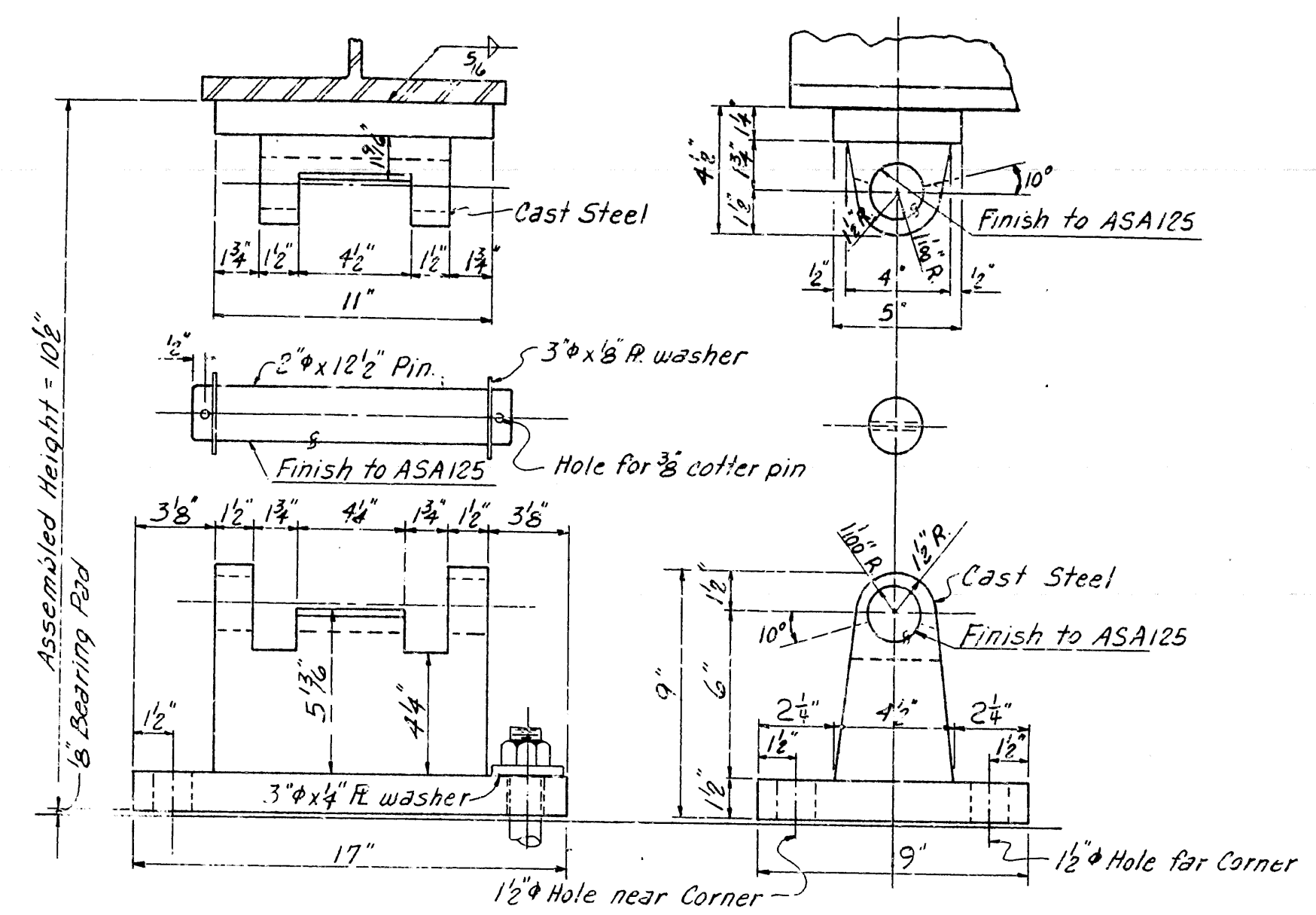


DATE REVISED	DATE FILMED	DATE REVISED	DATE FILMED	FED. ROAD NO.	STATE	FED. AID PROJ. NO.	FISCAL YEAR	SHEET NO.	TOTAL SHEETS
9-18-73				6	ARK.	RF-025-2(31)			
						JOB NO. 2782		28	187
						① 5501 A & B Superstr. Dtl's.			18086



TYPE D1 EXPANSION SHOE

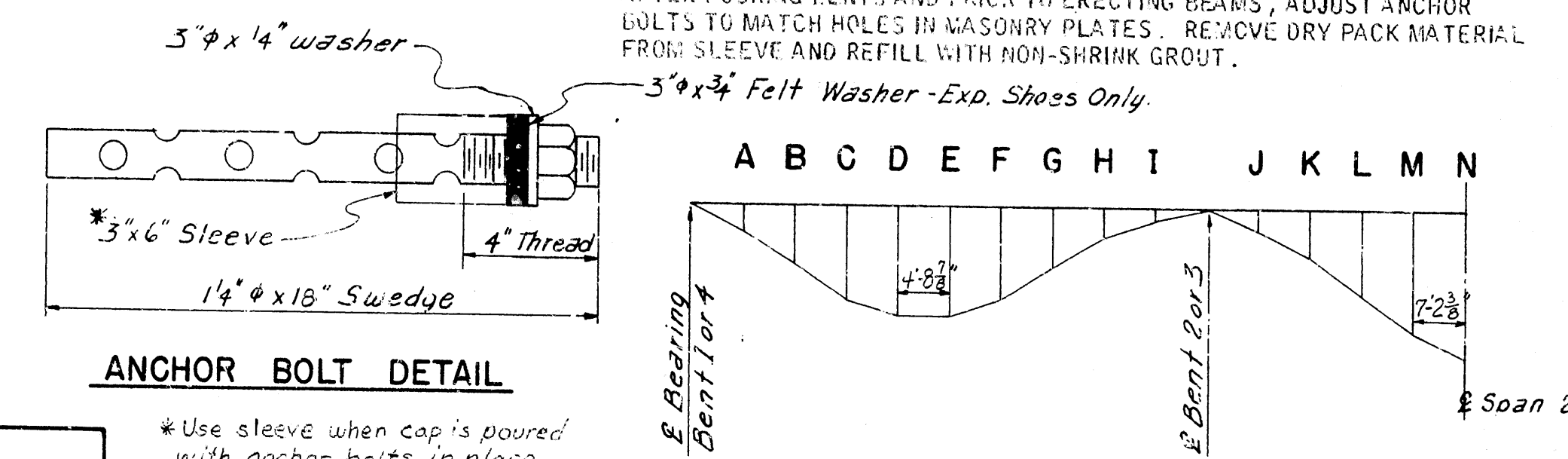
Material: Steel Castings ASTM A27 Grade 70-40, R ASTM A-36.



TYPE D3 FIXED SHOE

Material: Steel Castings ASTM A27 Grade 70-40

NOTE: 3" DIA. X 6" SHEET METAL SLEEVE. DRY PACK WITH STYROFOAM, OR URETHANE FOAM OF APPROVED EQUAL PRIOR TO POURING CONCRETE. AFTER POURING BENTS AND PRIOR TO ERECTING BEAMS, ADJUST ANCHOR BOLTS TO MATCH HOLES IN MASONRY PLATES. REMOVE DRY PACK MATERIAL FROM SLEEVE AND REFILL WITH NON-SHRINK GROUT.



ANCHOR BOLT DETAIL

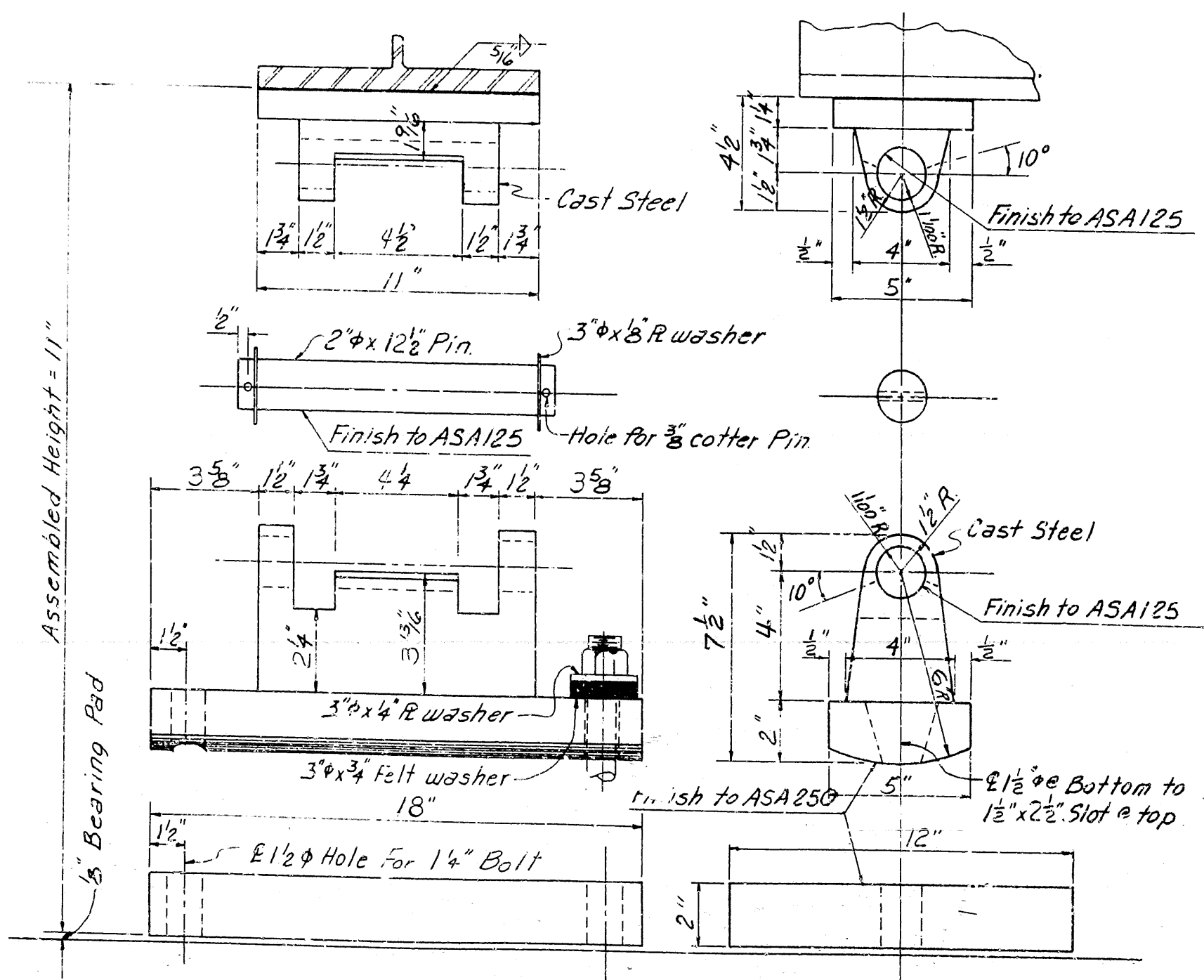
\* Use sleeve when cap is poured with anchor bolts in place.

DEAD LOAD DEFLECTION

TABLE OF DEFLECTIONS (IN)

POINT OF DEFLEC.	WT. OF Beam	WT. OF Beam & SLAB	WT. OF Beam SLAB, PARA, RAIL
A	.008	.049	.053
B	.014	.086	.094
C	.018	.107	.117
D	.017	.107	.117
E	.013	.087	.096
F	.008	.052	.058
G	.001	.012	.014
H	-.005	-.021	-.023
I	-.205	-.029	-.032
J	.024	.130	.143
K	.059	.321	.354
L	.093	.507	.557
M	.116	.637	.699
N	.125	.684	.750

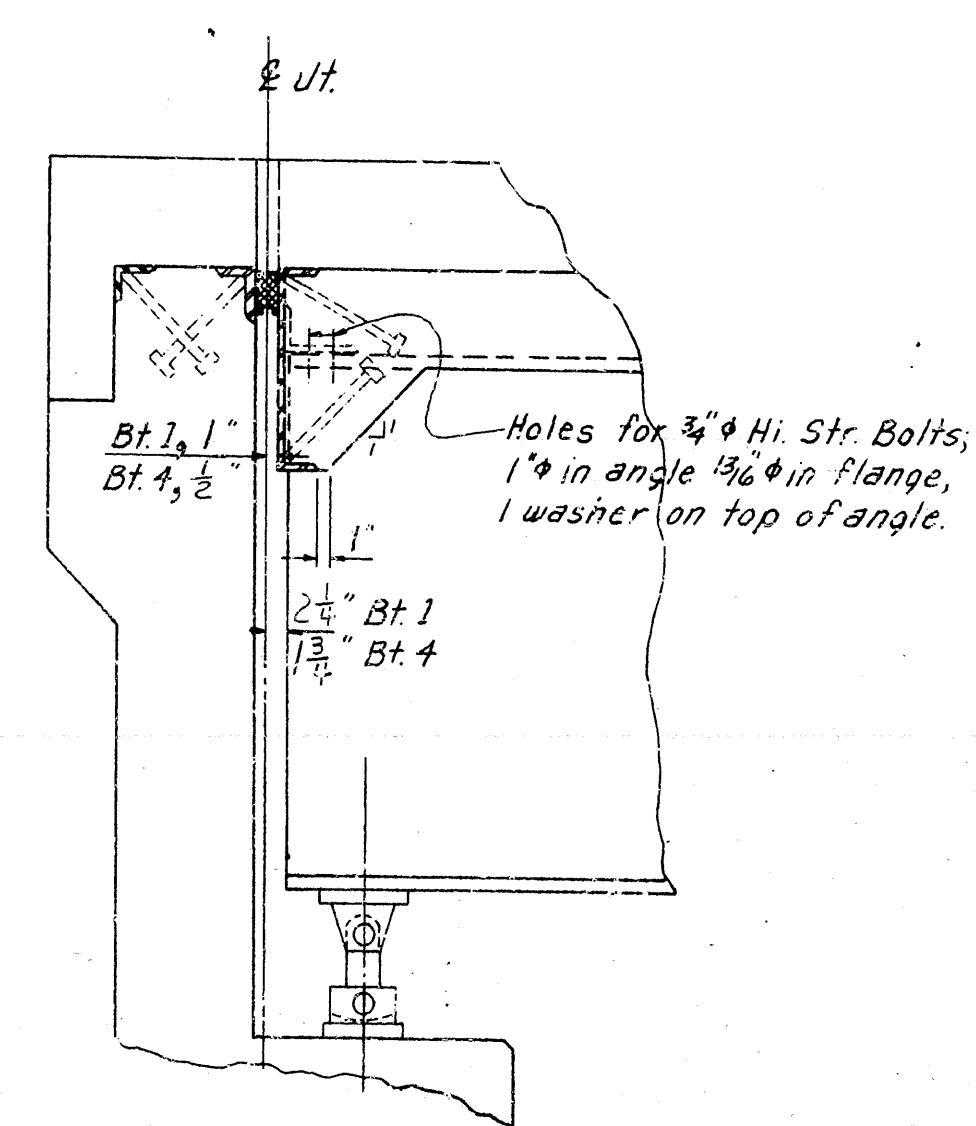
CAMBER FOR DEAD LOAD DEFLECTION PLUS VERTICAL CURVE  $\pm 4$ " TOLERANCE. DEFLECTIONS SHOWN ARE FROM A CHORD FROM CENTERLINE BEARING TO CENTERLINE BEARING. VERTICAL CURVE CORRECTIONS NOT INCLUDED. NEGATIVE SIGN (-) INDICATES POINT ABOVE CHORD.



TYPE D3 EXPANSION SHOE

No Scale

Material: Steel Castings ASTM A27 Grade 70-40, R ASTM A-36.



JOINT AT END BENT

3/4" - 1/2"

GENERAL NOTES:

ALL CONCRETE TO BE CLASS (SAC). ALL EXPOSED CORNERS TO BE CHAMFERED 3/4" UNLESS OTHERWISE NOTED.

FIELD CONNECTIONS TO BE BOLTED WITH HIGH STRENGTH BOLTS. BOLTS: 3/4"  $\phi$ , OPEN HOLES 13/16"  $\phi$  EXCEPT WHERE NOTED OTHERWISE. BOLT SPACING SHALL BE 2 1/2" UNLESS OTHERWISE NOTED. MINIMUM EDGE DISTANCE SHALL BE 1 1/4" UNLESS NOTED OTHERWISE. BOLTS SHALL BE PLACED WITH HEADS ON THE OUTSIDE FACE OF EXTERIOR GIRDERS AND ON BOTTOM OF GIRDER FLANGES.

STRUCTURAL SHAPES OF EQUAL OR GREATER STRENGTH MAY BE SUBSTITUTED FOR SHAPES SHOWN, BUT PAYMENT WILL BE MADE ON THE BASIS OF SHAPES SHOWN.

ALL WELDING SHALL CONFORM TO THE AMERICAN WELDING SOCIETY STANDARD SPECIFICATIONS FOR WELDED HIGHWAY AND RAILWAY BRIDGES, CURRENT EDITION.

SHOP PAINT: ALL STRUCTURAL STEEL EXCEPT GALVANIZED MEMBERS, CONTACT SURFACES OF BOLTED CONNECTIONS, AND SURFACES WITHIN 3" OF HOLES AND FIELD WELDS, AND SURFACES IN CONTACT WITH CONCRETE SHALL BE GIVEN ONE PRIME COAT AS SPECIFIED IN SECTION 807.59 OF THE STANDARD SPECIFICATIONS.

FIELD PAINT: AFTER ERECTION ALL EXPOSED STEEL SURFACES WHICH DID NOT RECEIVE A COAT OF SHOP PAINT EXCEPT SURFACES IN CONTACT WITH CONCRETE SHALL BE GIVEN ONE COAT AS SPECIFIED IN 807.59. TWO ADDITIONAL COATS OF FIELD PAINT SHALL BE APPLIED TO ALL EXPOSED SURFACES. FIRST COAT - RED LEAD TINTED WITH LAMP BLACK; SECOND COAT - ALUMINUM PAINT.

BEARINGS SHALL BE FINALLY PLATED IN ACCORDANCE WITH SEC. 807.05(2) OF THE STANDARD SPECIFICATIONS. THIS WORK AND MATERIAL IS TO BE CONSIDERED AS SUBSIDIARY TO THE ITEM OF "STRUCTURAL STEEL" AND WILL NOT BE PAID FOR DIRECTLY. THESE DRAWINGS SHOW GENERAL FEATURES OF DESIGN ONLY. SHOP DRAWINGS SHALL BE MADE IN ACCORDANCE WITH THE SPECIFICATIONS, SUBMITTED AND APPROVAL SECURED BEFORE FABRICATION IS BEGUN. ANCHOR BOLTS SHALL BE GALVANIZED TO CONFORM TO ASTM SPECIFICATIONS, DESIGNATION A153.

REINFORCING STEEL TO BE ASTM A615, GRADE 40. THE REINFORCING STEEL IS TO BE ACCURATELY LOCATED IN THE FORMS AND FIRMLY HELD IN PLACE BY STEEL WIRE SUPPORTS, SUFFICIENT IN NUMBER AND SIZE TO PREVENT DISPLACEMENT DURING THE COURSE OF CONSTRUCTION. THE WIRE SUPPORTS WILL NOT BE PAID FOR DIRECTLY BUT WILL BE CONSIDERED SUBSIDIARY TO THE ITEM OF "REINFORCING STEEL". SHOP LISTS AND BENDING DIAGRAMS OF REINFORCING STEEL, INCLUDING WIRE SUPPORTS, SHALL BE SUBMITTED AND APPROVAL SECURED BEFORE FABRICATION IS BEGUN.

THE CONTRACTOR SHALL POUR THE BRIDGE SLAB CONTINUOUS OVER THE ENTIRE UNIT USING A RETARDING AGENT TO RETARD SET. NOT LESS THAN 72 HOURS SHALL ELAPSE BETWEEN POURING OF SLAB AND THE CURB SECTIONS. IF THE PARAPET IS NOT POURED WITH THE CURB, 48 HOURS SHALL ELAPSE BETWEEN POURING OF CURB AND PARAPET.

ALL CONCRETE SHALL BE POURED AND SCREENED OFF PRIOR TO INITIAL SET. THE CONCRETE DECK SHALL BE FINISHED IN ACCORDANCE WITH SECTION 802.23 OF THE STANDARD SPECIFICATIONS. MOVEMENT OF THE FINISHING MACHINE ACROSS NEW CONCRETE SHALL BE ON PLANKS PLACED ON THE SURFACE AND SHALL BE PROHIBITED FOR 72 HOURS AFTER FINISHING THE POUR.

AS6 AND SHALL BE PAID FOR AT THE CONTRACT UNIT PRICE PER POUND BID FOR "STRUCTURAL STEEL IN BEAM SPANS A36".

FOR DETAILS OF BRIDGE RAILING, SEE DRAWING NO. 14992A.

SPECIFICATIONS: ARKANSAS STATE HIGHWAY COMMISSION STANDARD SPECIFICATIONS FOR HIGHWAY CONSTRUCTION, EDITION OF 1972, AND THE APPLICABLE SPECIAL PROVISIONS.

ALL WELDING THAT IS TO BE DONE DURING FABRICATION OF STRUCTURAL STEEL, INCLUDING TEMPORARY WELDS, SHALL BE DETAILED ON THE SHOP DRAWINGS AND SUBMITTED FOR APPROVAL. IF THE CONTRACTOR OR ERECTOR SHOULD WANT TO MAKE ADDITIONAL WELDS, WHETHER TEMPORARY OR PERMANENT, HE SHALL SUBMIT DETAILED DRAWINGS WITH A FORMAL REQUEST TO THE BRIDGE DESIGN DIVISION OF THE ARKANSAS STATE HIGHWAY DEPARTMENT FOR APPROVAL.

ASTM A27, GRADE 70-40 STEEL SHOE CASTINGS SHALL BE PAID FOR AT THE UNIT PRICE PER POUND BID FOR "STRUCTURAL STEEL IN PLATE GIRDER SPANS A36".

SHEET 3 OF 3  
DETAILS OF CONTINUOUS  
W-BEAM UNIT  
HOLLAND STREET  
HWY 270 - HWY 104  
JEFFERSON COUNTY  
ROUTE 65 SEC. 14

ARKANSAS STATE HIGHWAY COMMISSION  
LITTLE ROCK, ARK.

DRAWN BY: DPH DATE: 15 Jan 73  
TRACED BY: GVA DATE: 29 Jan 73  
CHECKED BY: GVA DATE: 29 Jan 73

BRIDGE NO. 5501 A & B DRAWING NO. 18086

BRIDGE ENGINEER